



*Joining
Reception
at
Broke Hall
School
2025*

In September after the holidays, you will be in Reception at Broke Hall School.



This is the school entrance to the playground.



In the mornings, you will wait on the playground near this gate for the teachers to open their classroom doors.

The Reception teachers will be:



Miss Thompson



Mrs. Addison

These are the Reception classrooms.



Each week, the teachers have half a day of PPA time
(planning, preparation and assessment).

For these sessions, the classes will be taught by:



Mr Bradford (P.E coach)

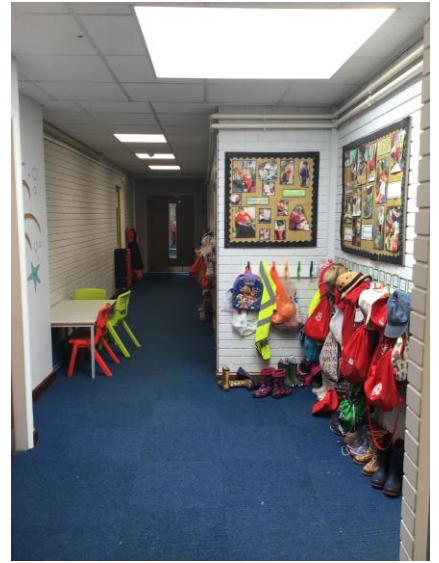


Mrs Hafiz-Leach
(HLTA)



Mrs Newland (HLTA)

Mrs Brennan (HLTA)



This is where the children hang their coats and PE bags.



These are the Reception toilets.



The Early Years library area.



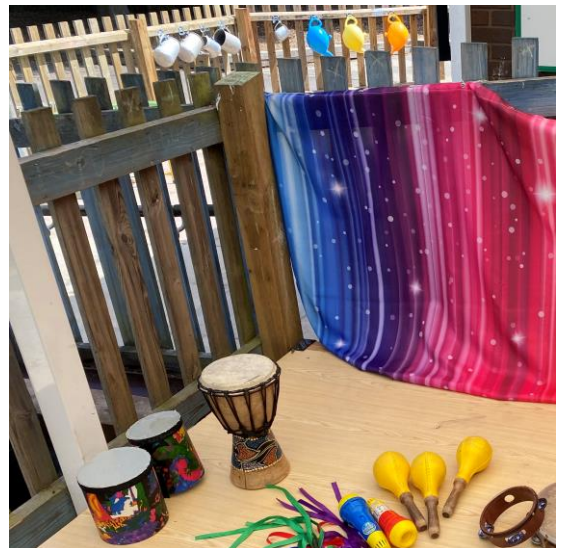
School library



This is our nurture room.



These are pictures of the outside areas





This is our school hall, which we use for PE, lunch and assemblies.

At lunchtime the tables are put up for children to have their lunch.

