



*Joining
Year 5
at
Broke Hall
School
2025*

The Year 5 teachers will be:



5C: Miss Cooper

5JA: Mrs Johnson (Mon-Weds) and Mrs Abbott (Thurs-Fri)



5AN: Mrs Noon (Mon) and Miss Allison (Tues-Fri)



Year 5 classrooms



5C

5AN



5JA

In the mornings, children will wait on the playground for the teachers to open the classroom doors.



Entrance to 5JA.



Entrances to 5AN and 5C

Each week, the teachers have half a day of PPA time
(planning, preparation and assessment).

For these sessions, the classes will be taught by:



Mrs Waldock (music
teacher)



Mr Bradford (P.E coach)

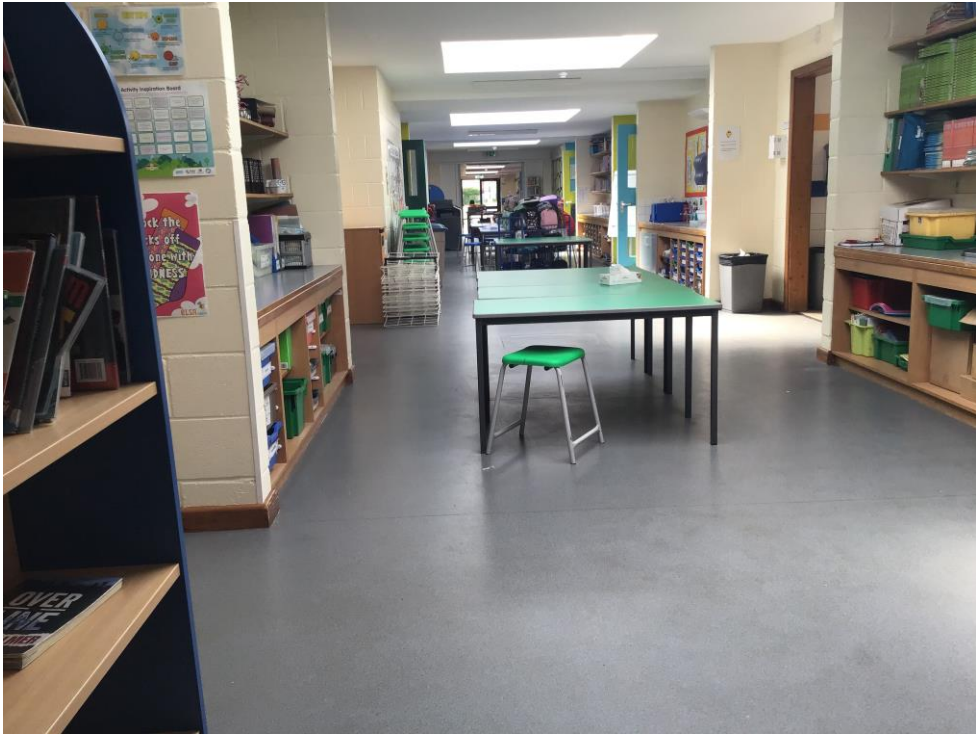


Mrs Hafiz- Leach
(HLTA)



Mrs Newland (HLTA)

Mrs Brennan (HLTA)



This is the Year 4/5 corridor.



These are the toilets children will use off the Year 4/5 corridor.



This is our school hall, which we use for PE, lunch and assemblies.

At lunchtime the tables are put up for children to have their lunch.



These are pictures of Broke Hall School's playgrounds and field.

