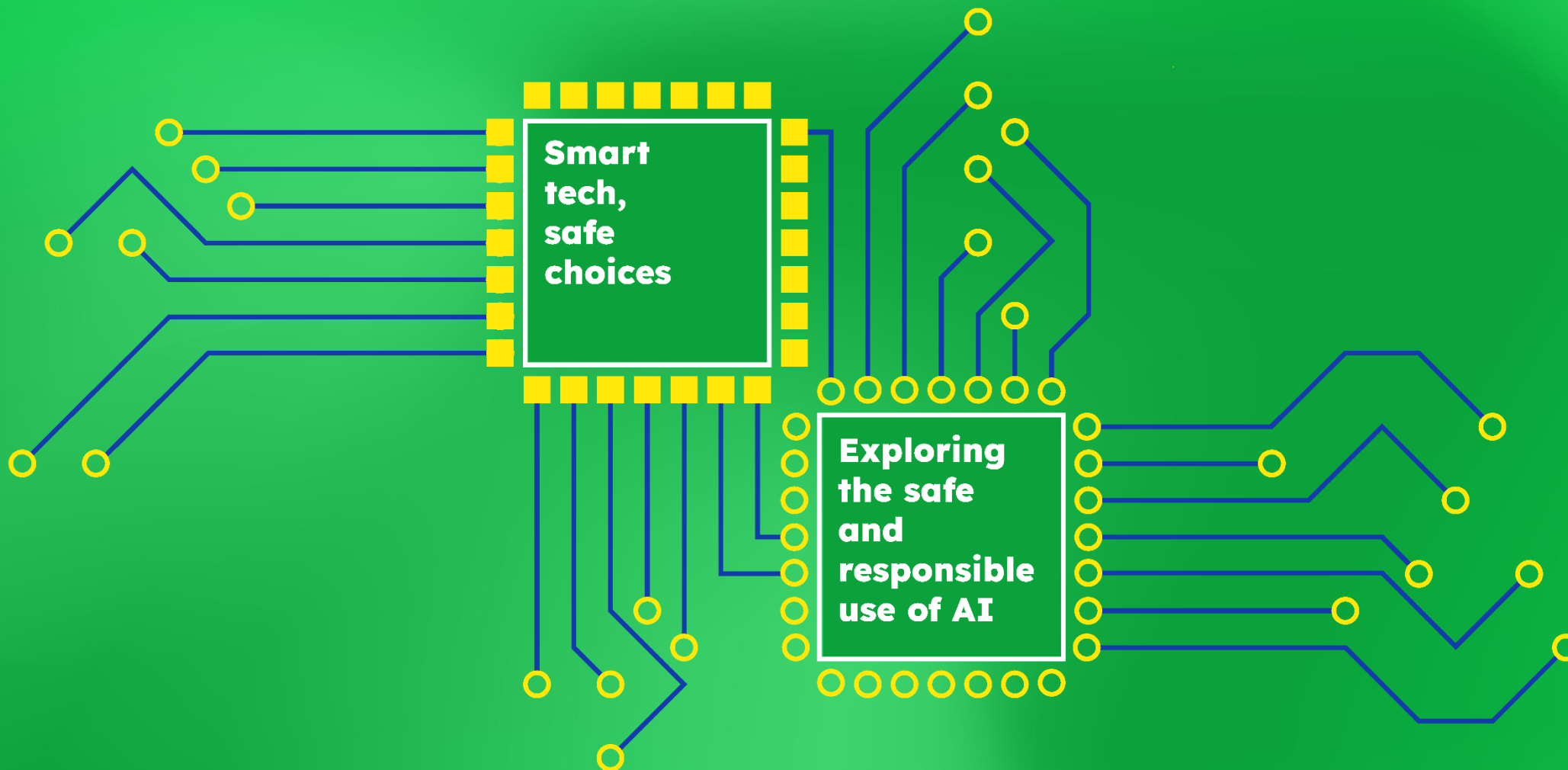


Safer Internet Day 2026

Slides for use with 7 to 11 year olds





Technology is all around us



**Is using technology always
better?**

Digital or Non-digital
Which do you prefer for writing?



Stand up



Sit down

Digital or Non-digital
Which do you prefer for drawing?

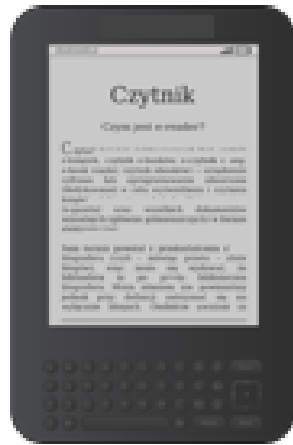


Stand up

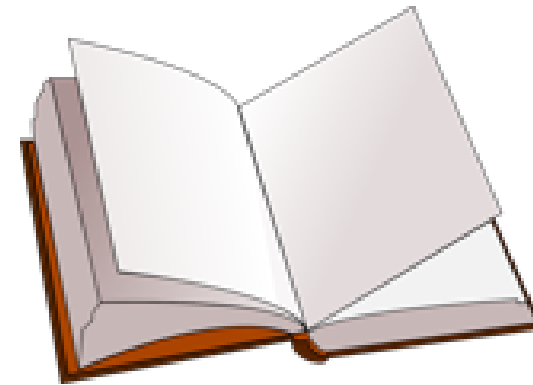


Sit down

Digital or Non-digital
Which do you prefer for reading?



Stand up



Sit down

Digital or Non-digital
Which do you prefer for listening to music?



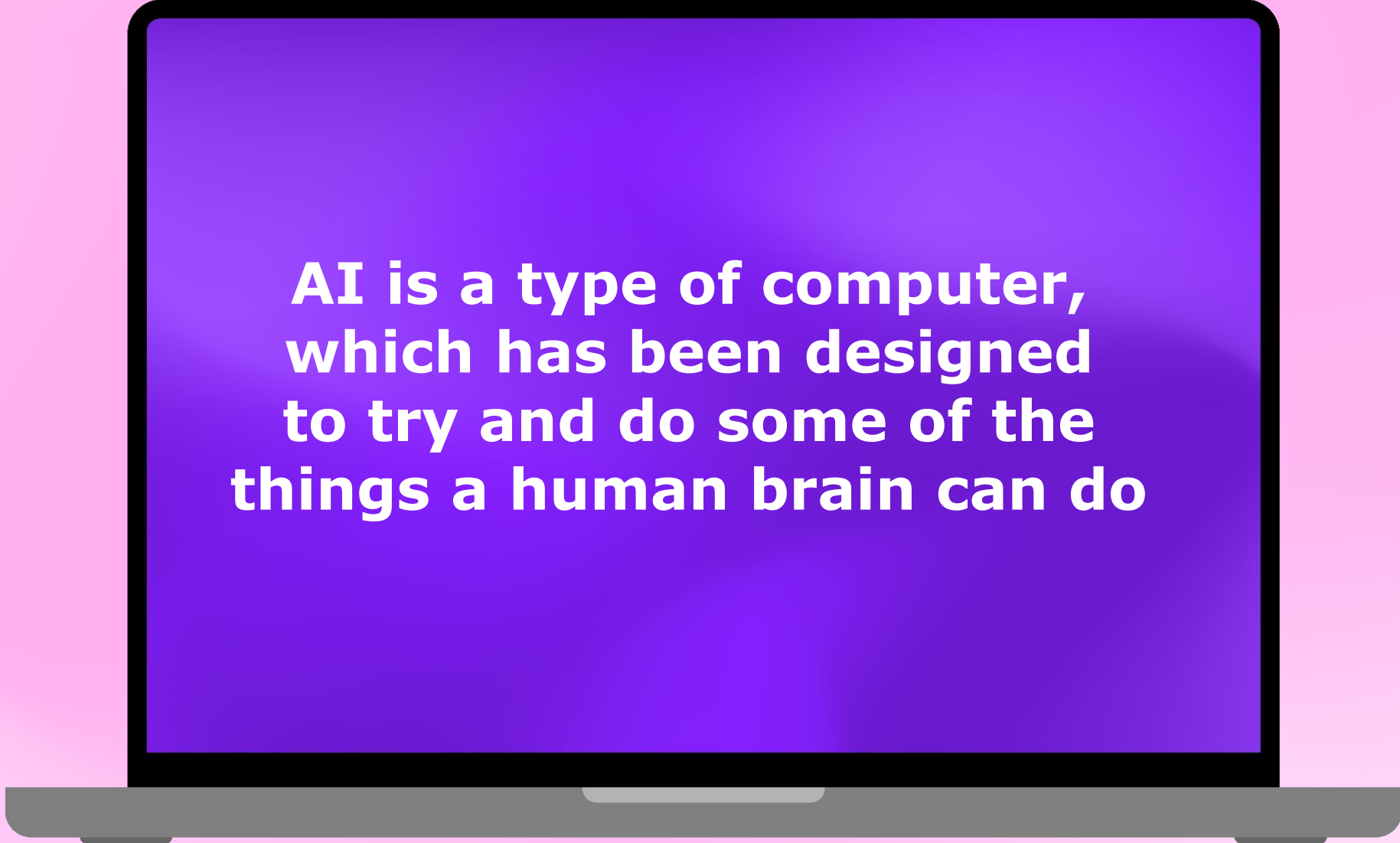
Stand up



Sit down

A stylized illustration of a laptop. The screen is a solid purple color and displays the text "Using AI" in a white, bold, sans-serif font. The laptop's body is a dark grey color. The background is a light pink color with rounded corners.

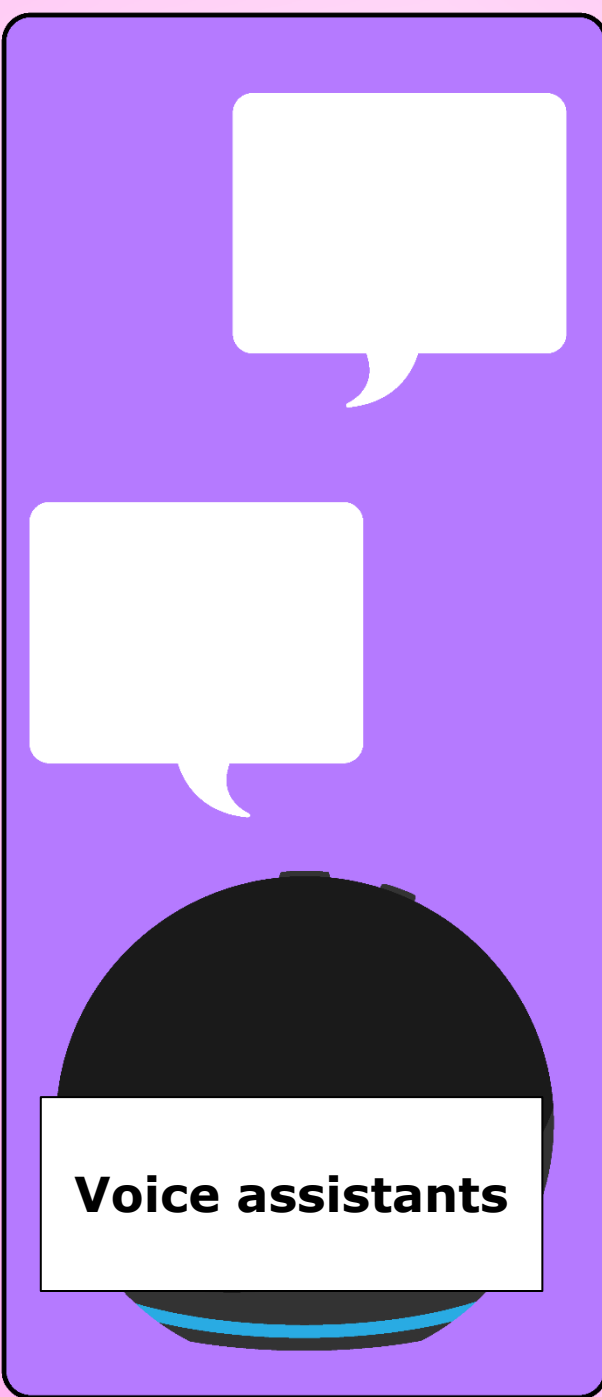
Using AI



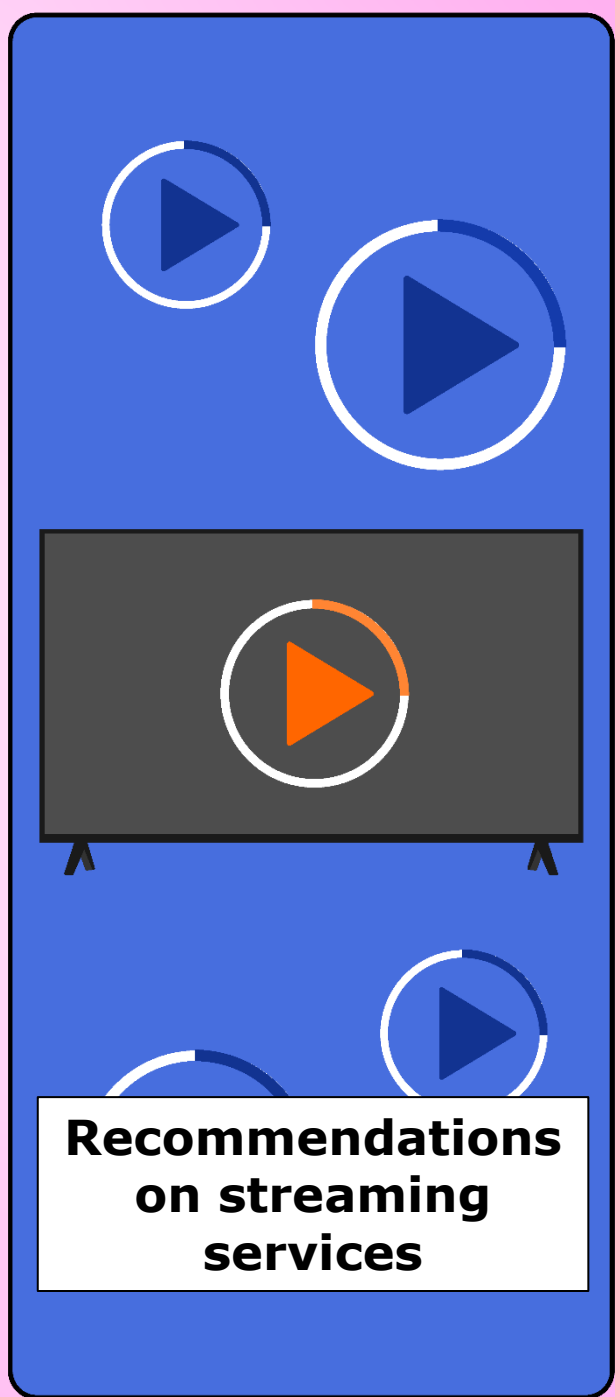
**AI is a type of computer,
which has been designed
to try and do some of the
things a human brain can do**

A diagram of an AI chip with a central text box. The chip is represented by a yellow rectangle with a border of blue circles. The text inside the box reads: "AI can be trained to do some of the things a human brain can do, like spot patterns and make decisions." The chip is connected to various external components by yellow lines, including a vertical stack of four blue circles on the left, a vertical stack of four blue circles on the right, and several other blue circles connected by lines to the top and bottom of the chip.

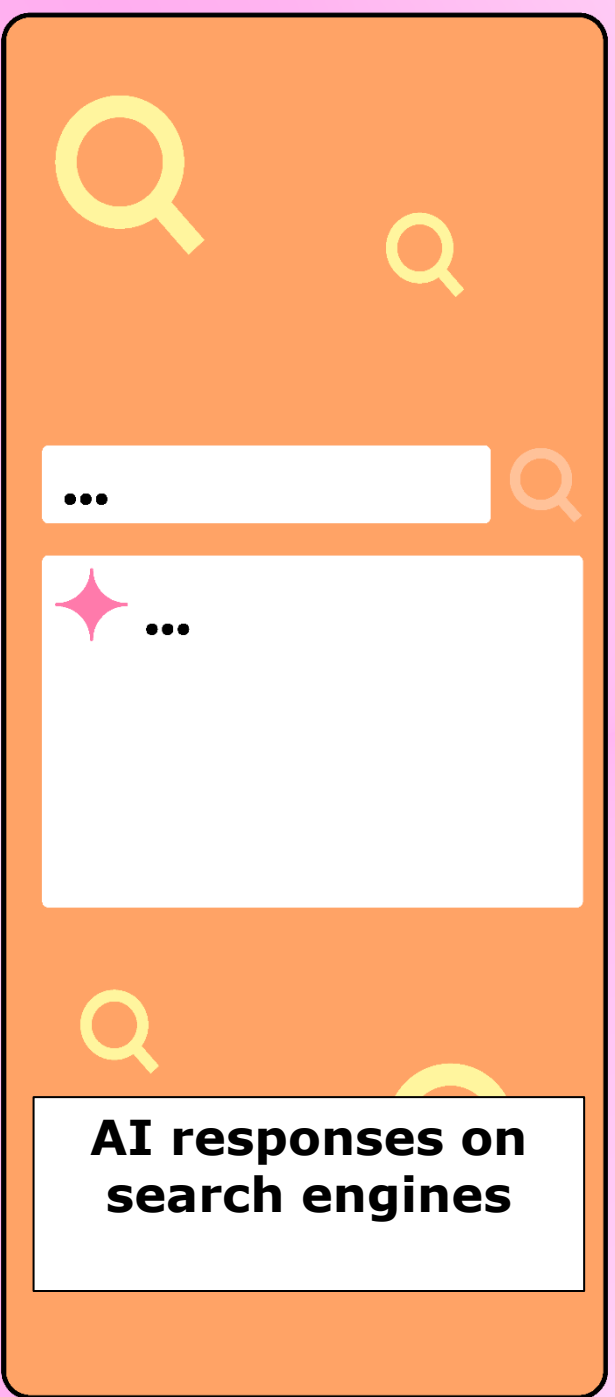
AI can be trained to do some of the things a human brain can do, like spot patterns and make decisions.

A purple rounded rectangle containing two white speech bubbles and a black Amazon Echo smart speaker at the bottom. A white text box at the bottom contains the text "Voice assistants".

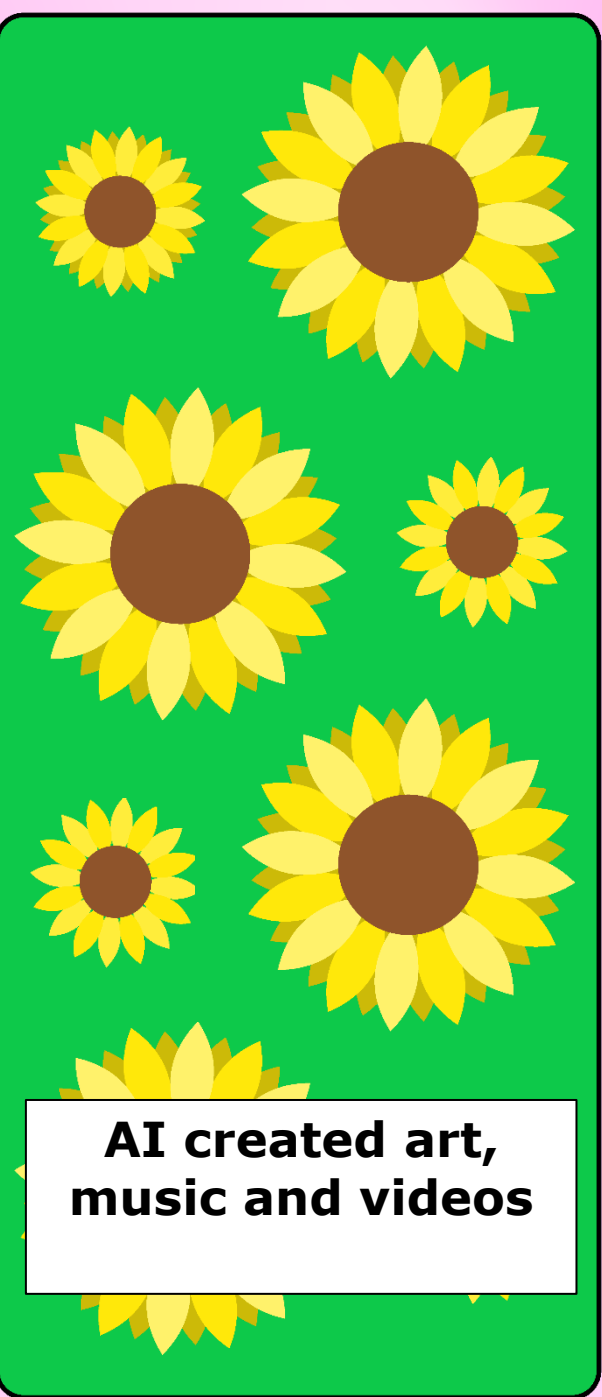
Voice assistants

A blue rounded rectangle featuring several play button icons: two small blue ones at the top, a large orange one in the center on a dark grey screen, and one small blue one at the bottom. A white text box at the bottom contains the text "Recommendations on streaming services".

Recommendations on streaming services

An orange rounded rectangle with search-related icons: a magnifying glass at the top left, a search bar with a magnifying glass icon at the top right, a search bar with a magnifying glass icon at the bottom right, and a magnifying glass at the bottom left. A white text box at the bottom contains the text "AI responses on search engines".

AI responses on search engines

A green rounded rectangle with a pattern of yellow sunflowers of various sizes. A white text box at the bottom contains the text "AI created art, music and videos".

AI created art, music and videos



**Uses of AI
Okay or not okay?**

Use AI to tell you a fact about your favourite animal

Use AI to tell a mean joke about your friend

Use AI to write a story for your homework and telling your teacher you wrote it

Use AI to get some tips for a game you like playing

Use AI to play some funny noises

Ask AI to play an episode of your favourite cartoon

Use AI to change a picture of your friend so they look silly

Make a picture using AI for homework and telling your teacher you made it

Use AI to play your favourite song

Ask AI to play a scary video



Responding to misuses of AI

Peter's problem



I am in a group chat.

A picture was shared of me.

They used AI to make me look strange.

They keep laughing at me.

I feel upset.

What should I do?

Can you give some advice to Peter?

Look at each scenario.
What advice would you give?

NEW EMAIL: Who do I trust?

I enjoy learning new facts about space and the solar system.

Recently, I was completing my project for school and decided to try using AI to find out some new information. Lots of my friends at school have told me it's reliable.

I saw a fact, and I am pretty sure it wasn't true, but my friends have told me that AI is never wrong. What can I do next?

From Doubtful in Dundee

NEW EMAIL: Just a joke?

I am part of a group chat with 5 of my friends.

One member of the chat is using AI to write jokes about the other members of the group. They were funny at first, but now some of them are mean and rude.

Why are they doing this? We're supposed to be friends!

From Hurt in Hull

NEW EMAIL: Safe or a scam?

I was playing a game online and noticed a pop up telling me I could get free gems if I clicked the link. It looked very realistic!

My friend told me that this was likely a scam, and it looks like it was made with AI. I'm unsure what to do, I really want the free gems, but I don't want to be scammed!

From Tempted in Telford

Look at each scenario.
What advice would you give?

NEW EMAIL: It's not funny

My friend and I were playing on a chatbot. We were having fun asking silly questions and laughing at the answers.

But then my friend started asking rude questions and using bad language. They said it's just a laugh, but it made me feel uncomfortable. What should I do?

From Bothered in Bangor

NEW EMAIL: AI nightmare...

I enjoy watching videos online and I am a big fan of cars and racing.

Last week, I came across a video which made me feel upset. It was edited with AI, and it was horrible and scary. Now it's keeping me awake at night because it is giving me bad dreams.

From Sleepless in Swansea

A graphic with a green background. In the center is a white rounded rectangle with a dark blue border. The text "AI chatbots" is written in bold black font inside the rectangle. Surrounding the rectangle are stylized circuit lines in dark blue with yellow circular nodes. On the left, lines extend from the rectangle towards the bottom-left. On the top, lines extend from the rectangle towards the top-right. On the right, three lines extend from the rectangle towards the right edge. On the bottom, lines extend from the rectangle towards the bottom-left.

AI chatbots

What is an AI chatbot?



An AI chatbot is a computer program that you can talk to.

It uses artificial intelligence to respond to what you say in a personalised way.

You might find chatbots in lots of different places like apps, games and websites.

Chatbots use AI to respond in a realistic way that sounds like a human.

Some might even seem like they have a personality, emotions or can remember what you've talked about before.

Some chatbots can be personalised to look and behave a certain way. They can feel like a friend or someone you know, but that is just how they are designed.

People might use AI chatbots for a variety of reasons

AI chatbots help me by answering questions



I talked to an AI chatbot about my favourite book and it recommended other books I would like



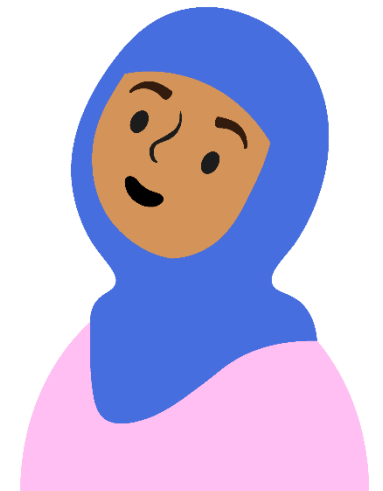
I got a chatbot to test me on my times tables



A chatbot answered my question when I was stuck with something on an app



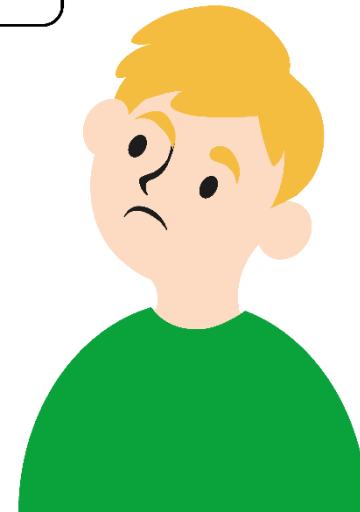
I practise speaking a different language with an AI chatbot



Some people use chatbots for help and support with their emotions or difficult situations.

If I'm feeling down, I talk to an AI chatbot

If I don't know what to do in a stressful situation, I ask an AI chatbot



Why might talking to a person be better?

An AI chatbot doesn't have emotions

TRUE

FALSE

An AI chatbot doesn't have emotions

TRUE

Some chatbots may seem like they have emotions, but they have just been programmed this way. They cannot think or feel for themselves so they can't understand or care about other people's feelings like a person can.

Talking to a chatbot is like talking to a friend

TRUE

FALSE

Talking to a chatbot is like talking to a friend

FALSE

Talking to an AI chatbot can be fun and entertaining. It might make jokes with you or express interest in your hobbies or life. However, an AI chatbot is not a person and has only been programmed to seem friendly because it provides a better experience for the user. Talking to a friend is different because you are building a relationship with another person and you both care for each other.

An AI chatbot can understand my problems

TRUE

FALSE

An AI chatbot can understand my problems

FALSE

AI chatbots have access to huge amounts of information on many different topics, which can make it seem like they are an expert or know everything. When you ask a chatbot for advice, it may seem like it is helpful, however it does not understand your problems like a person can and may even give false information. A person like a trusted adult or doctor uses their knowledge on a topic and their understanding of you and your feelings to help you with specific problems.

AI chatbots always give safe advice

TRUE

FALSE

AI chatbots always give safe advice

FALSE

When you speak to an AI chatbot, they can often find helpful information to share with you. However not all advice given by chatbots is safe and reliable, especially if you are in a difficult or dangerous situation. When you are upset, worried or confused about something, it can be harder to think clearly. Talking to a person means you can understand those emotions and start to feel better. They can also help you consider different options for what to do next, check in with you later or help you get more support you may need.

**An AI chatbot can help me more quickly
than a person can**

TRUE

FALSE

An AI chatbot can help me more quickly than a person can

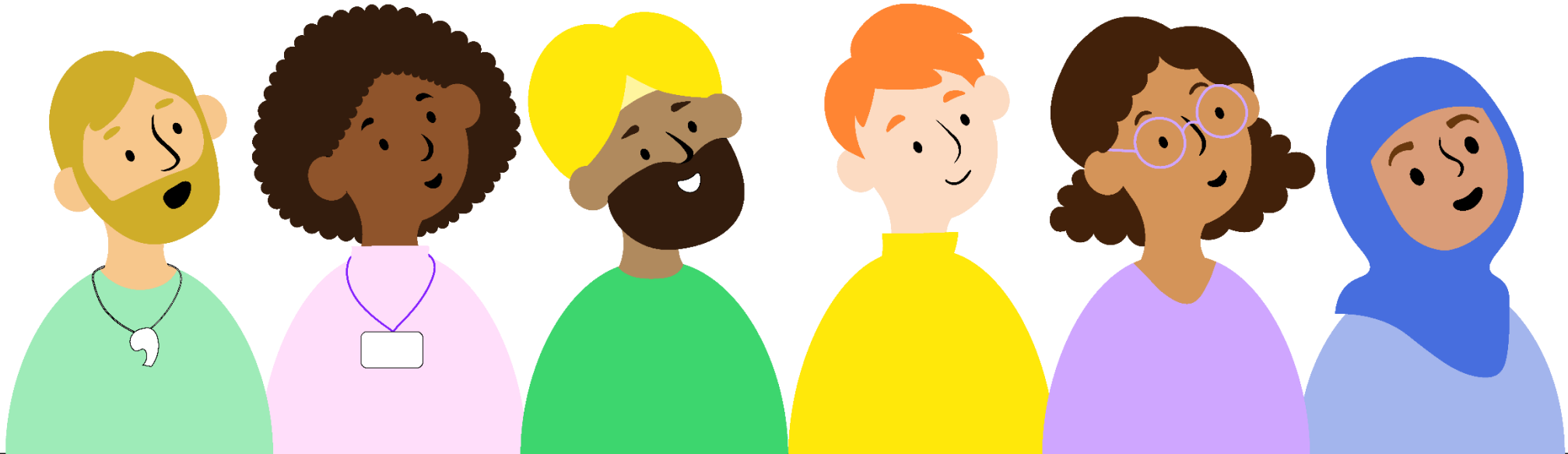
FALSE

A chatbot can usually respond to you very quickly, which can be helpful in some situations. However, this does not mean a chatbot is the best place to go for help and advice. Think about fast food. It might be tasty and convenient, but it's not always healthy and you shouldn't rely on it for all your meals. The same goes for a chatbot. It can be fun to use one occasionally or to help with some tasks, but you shouldn't rely on it for everything. A trusted adult is a much safer place to go for help and advice.

childline

ONLINE, ON THE PHONE, ANYTIME

childline.org.uk | 0800 1111



Who can you talk to?

Trusted adult at home or school
A club leader or youth worker
Health professionals such as a doctor
Childline on 0800 1111