

YEAR 5

MEET THE TEAM

The Teachers:

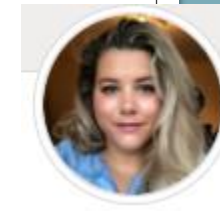
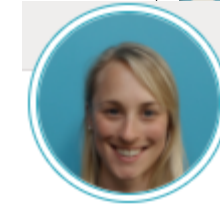
5B Miss Babu

5S Mrs Stark

5T Miss Themans

PPA is on:

Tuesday pm





LSAs : Ms Coghill, Mrs Bailey (mornings only)

Mrs Joyce (afternoons only)

Miss Arthur (2 days per week)

HLTA Teachers : Ms Bota (RE), Mr Colchester (PE)

PPA / ECT Cover : Mrs Waldock (Music), Mr Rich

PPA is on:

Tuesday pm

Themes for this year

Autumn Term

- *Earth Matters Part 1 (links to Aylmerton Residential trip)
includes rivers and coasts*
- *Dunwich trip (links to coastal erosion)*

Spring Term

- *Ancient Civilisations*
- *Ancient Egyptians*
- *Visitor with VR goggles to take a journey through space*

Summer term

- *Early Islamic Civilization*
- *Earth Matters Part 2 includes mountains*
- *Visit to Ipswich Art Gallery*



English

Newspaper
reports
Narrative
Information texts
Explanation texts

Maths

Place Value
Addition and Subtraction
Multiplication & Division
Fractions

MFL

French

Science

Forces
Properties and
changes in
materials

Earth Matters

Art

Seascapes

Computing

E-Safety
Algorithms &
Programming

PE

Dance &
Gymnastics
Basketball & Tag
Rugby
Swimming

DT

Textiles – Beach
Bag



Autumn

Music

Violin
Classroom Jazz

Geography

Coasts & rivers



RE

Where did the Bible
come from?
Stories of
Christianity

PSHE

Being me in my
world
Celebrating
Difference

Weekly Timetable – 5S

M	8.55-9.15 Assembly	9.15-9.45 Whole class reading – Newsround	9.45-10.45 English	10.45-11.00 Break	11.00-12.00 Maths	12.00-12.10 Handwriting	12.10-1.10 Lunch	1.10-2.10 Foundation 1 (60 mins) Science	2.10-2.55 Foundation 2 (45 mins) (Extra time - Arithmetic)	2.55-3.20 Reading for pleasure
T	8.55-9.15 Assembly	9.15-9.45 Whole class reading –	9.45-10.45 English		11.00-12.00 Maths	12.00-12.10 Handwriting		PPA 1 1.10-2.05 Music	PPA 2 2.05-3.00 RE PE Outdoor	3.00-3.20 Reading for pleasure
W	8.55-9.30 Whole class reading –	9.30-10.30 English	10.30-10.45 Spelling Test		11.00-12.00 Maths	12.00-12.10 Reading for pleasure		1.10-2.10 Foundation 1 (60 mins) PE Indoor - Dance	2.10-2.55 Foundation 2 (45 mins) (Extra time – Arithmetic)	2.55-3.20 Singing Assembly
Th	8.55-9.30 Whole class reading –	9.30-10.30 English	10.30-10.45 Times tables		11.00-12.00 Maths	12.00-12.10 Class Assembly		1.10-2.10 Foundation 1 (60 mins) Geography	2.10-2.55 Foundation 2 (45 mins) PSHE	2.55-3.20 Reading for pleasure
F	8.55-9.30 Whole class reading – VIPERS skills session	9.30-10.30 English	10.30-10.45 Times tables		11.00-12.00 Maths	12.00-12.10 Reading for pleasure		1.10-2.10 Foundation 1 (60 mins) Computing	2.10-2.50 Foundation 2 (45 mins) French	2.50-3.20 Assembly

Weekly Timetable – 5T

M	8.55-9.15 Assembly	9.15-9.45 Whole class reading	9.45-10.45 English	10.45- 11.00 Break	11.00-12.00 Maths	12.00-12.10 Handwriting	12.10- 1.10 Lunch	1.10-2.10 Foundation 1 (60 mins) Science	2.10-2.55 Foundation 2 (45 mins) (Extra time - Arithmetic)	2.55-3.20 Reading for pleasure
T	8.55-9.15 Assembly	9.15-9.45 Whole class reading	9.45-10.45 English		11.00-12.00 Maths	12.00-12.10 Handwriting		PPA 1 1.10-2.05 Music	PPA 2 2.05-3.00 RE PE Outdoor	3.00-3.20 Reading for pleasure
W	9:00 – 10:45 Swimming				English	10.30-10.45 Spelling		Maths	2.10-2.55 Foundation 2 (45 mins) (Extra time – G Reading)	
Th	8.55-9.30 Whole class reading	9.30-10.30 English	10.30-10.45 Times tables		11.00-12.00 Maths	12.00-12.10 Class Assembly		1.10-2.10 Foundation 1 (60 mins) Computing	2.10-2.55 Foundation 2 (45 mins) PSHE	2.55-3.20 Reading for pleasure
F	8.55-9.30 Whole class reading	9.30-10.30 English	10.30-10.45 Times tables		11.00-12.00 Maths	12.00-12.10 Reading for pleasure		1.10-2.10 Foundation 1 (60 mins) Geography	2.10-2.50 Foundation 2 (45 mins) French	2.50-3.20 Assembly

Weekly Timetable – 5B

M	8.55-9.15 Assembly	9.15-9.45 Whole class reading	9.45-10.45 English	10.45-11.00 Break	11.00-12.00 Maths	12.00-12.10 Handwriting	12.10-1.10 Lunch	1.10-2.10 Foundation 1 (60 mins) Science	2.10-2.55 Foundation 2 (45 mins) (Extra time - Arithmetic)	2.55-3.20 Reading for pleasure
T	8.55-9.15 Assembly	9.15-9.45 Whole class reading	9.45-10.45 English		11.00-12.00 Maths	12.00-12.10 Handwriting		PPA 1 1.10-2.05 Music	PPA 2 2.05-3.00 RE PE Outdoor	3.00-3.20 Reading for pleasure
W	9:00 – 9:45 English		9:45 - Swimming		-11:30 Swimming	11:30 – 12:10 English		Maths	2.10-2.55 Foundation 2 (45 mins) (Extra time – G Reading)	
Th	8.55-9.30 Whole class reading	9.30-10.30 English	10.30-10.45 Times tables		11.00-12.00 Maths	12.00-12.10 Class Assembly		1.10-2.10 Foundation 1 (60 mins) Geography	2.10-2.55 Foundation 2 (45 mins) PSHE	2.55-3.20 Reading for pleasure
F	8.55-9.30 Whole class reading	9.30-10.30 English	10.30-10.45 Times tables		11.00-12.00 Maths	12.00-12.10 Reading for pleasure		1.10-2.10 Foundation 1 (60 mins) Computing	2.10-2.50 Foundation 2 (45 mins) French	2.50-3.20 Assembly

Equipment

- Children will be provided with the equipment that they will need to use in school. Pencil cases from home will not be permitted.
- As all equipment is provided in school, children do not need to bring in a rucksack or book bag.
- Children should only be bringing a water bottle, lunch box (if applicable) and reading book into school. Coats will be needed for the cooler weather.

Accelerated Reader

- Children will continue to have access to the Accelerated Reader programme in Year 5. At the beginning of the term, they will complete a Star Reader assessment. This will give them a ZPD from which to choose an appropriate book (for example 3.4-5.6).
- We also want our pupils to have an appropriate level of challenge so this year, for the first time, we are using reading targets which are linked to Accelerated Reader. This 'points target' is personalised to your child and is linked to their reading ability. When your child has read a book, they are able to complete a quiz and this allows them to earn points.
- There will be more information sent out about this in the next few weeks.
- We expect most children to be quizzing every 2-3 weeks.
- Reading records will be given out for children to record their reading or make notes to help them with their Accelerated Reader quizzes. However, these will not be collected or checked by their class teacher. Reading will be monitored through Accelerated Reader.

Homework

- Children will be assigned one piece of spelling homework each week – this will be based on a spelling list of words which they will be tested on weekly. It will be accessible on Spelling Shed.
- In addition, children will be set either a piece of reading, English or a piece of maths homework each week.
- Children in Year 5 are also expected to log on to Times Tables Rockstars as often as possible to reinforce their knowledge of their times tables and relevant division facts.

PE Kit

- Children will need to come into school in their PE kit with a school jumper and wearing school shoes. They will need a pair of trainers to change into for their PE lesson, and a warmer jumper if needed.
- The PE kit should consist of red shorts, white T-shirt & trainers and as the weather gets colder an extra layer to go on top. Jumpers and joggers should be plain black, navy or grey.
- For indoor PE sessions, children may wear plimsolls if desired.

Aylmerton

If you have any further questions regarding Aylmerton, please direct them to the Front Office.

Rules/Rewards and Sanctions

All children have been told the school rules and expectations of behaviour in Upper Phase.

Rules, rewards and sanctions are displayed in all classrooms.

Any Questions

Any questions? Please contact the front office who will pass these on. Email contact is preferable at this time.